

**AN ORDINANCE ENLARGING, EXTENDING AND  
DEFINING THE CORPORATE LIMITS AND  
BOUNDARIES OF THE CITY OF SALTILLO, IN LEE  
COUNTY, MISSISSIPPI**

**BE IT ORDAINED BY THE MAYOR AND BOARD OF ALDERMEN OF  
THE CITY OF SALTILLO, MISSISSIPPI:**

**SECTION 1.** It is hereby found and determined, public convenience and necessity requiring the same, that the corporate boundaries and limits of the City of Saltillo, which lies in Lee County, Mississippi, be and the same are hereby extended and enlarged so as to embrace the following adjacent unincorporated lands and territory in Lee County, Mississippi, to-wit:

**AREA 1:**

BEGINNING at the Southeast corner of the Southeast Quarter of Section 31, Township 8 South, Range 6 East, Lee County, Mississippi and run thence West along the South line of Section 31 for a distance of 1396 ft. to a point where the South line of Section 31 intersects the West right of way of Mississippi State Highway No. 145; thence run North 02 degrees 46 minutes 29 seconds East along the West right of way of Mississippi State Highway No. 145 for a distance of 1190 ft. to the intersection of the West right of way of Mississippi State Highway No. 145 and the South line of Old Hickory Trail; thence run along the South line of Old Hickory Trail as follows: North 45 degrees 06 minutes 49 seconds West for 136.13 ft.; thence North 57 degrees 23 minutes 44 seconds West for 59.58 ft.; thence leaving said road run to and along the West line of the Dollar General property as follows: thence run North 06 degrees 25 minutes 50 seconds West for a distance of 236.33 ft.; thence run North 72 degrees 21 minutes 58 seconds West for a distance of 112.43 ft.; thence run North 02 degrees 46 minutes 46 seconds East for a distance of 354.40 ft. to the North line of the Birmingham Ridge Road; thence run South 89 degrees 23 minutes 15 seconds East along the North line of the Birmingham Ridge Road for a distance of 49.15 ft. to a point that is 300 ft. Westwardly measured perpendicular from the center line of Mississippi State Highway No. 145; thence run North 02 degrees 46 minutes 29 seconds East along a line that is parallel with and 300 ft. from the center line of Mississippi State Highway No. 145 for a distance of 2220 ft. to a point that is 360 ft. South of the North line of Section 31, Township 8 South, Range 6 East; thence run East for a distance of 68.33 ft. to East line of the West half of the Northeast Quarter of Section 31 and on the 2005 City Limits line; thence run along the 2005 City Limits Line as follows: South for a distance of 1204.51 ft.; thence run EAST for a distance of 208.66 ft. to a point where the East right of way of Mississippi State Highway No. 145 and the 2005 City Limits line intersects the center of Mud Creek; thence run along and with the center of Mud Creek and the 2005 City Limits line 1486

ft., more or less to the East line of Section 31 and the West line of Section 32; thence run South for a distance of 84.03 ft. to the Northwest corner of the Southwest Quarter of Section 32; thence run East for a distance of 55.98 ft. to the center of Mud Creek; thence run along and with the center of Mud Creek and the 2005 City Limits Line 2100 ft, more or less to the point where the center of Mud Creek intersects the South line of Section 32; thence run West along the South line of Section 32 for a distance of 840.29 ft. to the point of beginning.

Lying and being part in the Southeast Quarter of Section 31, part in the Northeast Quarter of Section 31 and part in the Southwest Quarter of Section 32, all in Township 8 South, Range 6 East, Lee County, Mississippi and contains 117 acres, more or less.

**AREA 2:**

BEGINNING at a point on the North line of Industrial Park Road intersecting the East line of Section 30, Township 8 South, Range 6 East, Lee County, Mississippi, said point being approximately 1445 ft. South of the Northeast corner of Section 30 and run thence North 87 degrees 04 minutes 01 seconds West along the North line of Industrial Park Road for a distance of 252.70 ft.; thence run North 01 degrees 15 minutes 59 seconds East for a distance of 141.37 ft.; thence run North 88 degrees 39 minutes 10 seconds West for a distance of 222.62 ft. to a point on the 2005 City Limits line; thence run South 00 degrees 03 minutes East for a distance of 135.59 ft. to a point on the North line of Industrial Park Road; thence North 87 degrees 08 minutes West for 204.12 feet; thence North 66 degrees 37 minutes West for 120.52 feet to the East line of Mississippi state Highway No. 145; thence along said right of way as follows: South 04 degrees 43 minutes West for 52.28 feet; thence South 2 degrees 48 minutes West for 196.20 feet; thence South 2 degrees 21 minutes West for 1021.45 feet; thence leaving said right-of-way run North 89 degrees 06 minutes East for 920 feet, more or less, to the center of Euclatubba Creek; thence run EAST for a distance of 390.89 ft. to the East line of Turner Park Drive; thence along the East line of Turner Park Drive as follows: with a curve to the right with an arc length of 480.60', with a radius of 1024.35', with a chord bearing of North 12 degrees 17 minutes 18 seconds West , with a chord length of 476.20'; thence North 03 degrees 03 minutes 58 seconds West for a distance of 710.0 ft. to a point in line with the North line of Industrial Park Road; thence run North 87 degrees 04 minutes 01 seconds West to and along the North line of Industrial Park Road for a distance of 293.27 ft. to the point of beginning.

Lying and being part in the Northeast Quarter of Section 30 and Part in the Northwest Quarter of Section 29, all in Township 8, Range 6 East, Lee County, Mississippi and contains 32.218 acres, more or less.

**AREA 3:**

BEGINNING at a point on the East right of way Mississippi State Highway No. 145 where the 2005 City Limits intersects said right of way that is North 1410 ft., more or less from the Southwest corner of the Southwest Quarter of Section 20, Township 8 South, Range 6 East, Lee County, Mississippi and run thence along the East right of way of Mississippi State Highway No. 145 as follows: thence run South 20 degrees 06 minutes 58 seconds West for a distance of 1331.76 ft.; thence with a curve to the left with an arc length of 465.13', with a radius of 5677.16', with a chord bearing of South 17 degrees 51 minutes 05 seconds West, with a chord length of 465.00'; thence leaving said right of way run South 73 degrees 13 minutes 47 seconds East along the north line of the Lee County Supervisors 2nd District Maintenance Shop and an extension thereof for a distance of 899.07 ft. to the East line of Turner Park Drive; thence run along the East line of Turner Park Drive as follows: North 03 degrees 03 minutes 58 seconds West for a distance of 1014.25 ft.; thence with a curve to the right with an arc length of 416.32', with a radius of 1379.30', with a chord bearing of North 06 degrees 28 minutes 39 seconds East, with a chord length of 414.74'; thence run North 14 degrees 53 minutes 44 seconds East for a distance of 517.99 ft. to a point where the East line of Turner Park Drive intersects with the 2005 city limits line; thence run along the 2005 City Limits line as follows; South 89 degrees 53 minutes 00 seconds West for a distance of 43.50 ft.; thence North 86 degrees 56 minutes 04 seconds West for a distance of 314.73 ft.; thence North 69 degrees 53 minutes 02 seconds West for a distance of 30.00 ft. to the point of beginning.

Lying and being part in the Southwest Quarter of Section 20, part in the Southeast Quarter of Section 19, part in the Northeast Quarter of Section 30 and part in the Northwest Quarter of Section 29, all in Township 8 South, Range 6 East, Lee County, Mississippi and contains 24 acres, more or less.

**AREA 4:**

COMMENCING at the Southwest corner of Section 24, Township 8 South, Range 5 East, Lee County, Mississippi and run thence North for 2535 ft., more or less to the center of a creek or ditch that is a Mud Creek Tributary East of Mud Creek and the point of beginning; thence run along the center of said creek as follows: North 32 degrees 02 minutes 37 seconds West for a distance of 391.0 ft.; thence North 07 degrees 12 minutes 41 seconds West for a distance of 158.71 ft.; thence North 11 degrees 18 minutes 27 seconds East for a distance of 1034.44 ft.; thence North 00 degrees 53 minutes 26 seconds West for a distance of 266.51 ft.; thence North 16 degrees 39 minutes 25 seconds West for a distance of 275.17 ft.; thence North 22 degrees 59 minutes 18 seconds West for a distance of 1065.32 ft.; thence North 25 degrees 49 minutes 11 seconds West for a distance of 519.80 ft.; thence North 18 degrees 31 minutes 28 seconds West for a

distance of 245.09 ft. to the North line of the Gregory Property and the South line of the Wesson Property; thence EAST for a distance of 2140 ft. to the East road ditch of Wesson Park Road or Lee County Road 521 ; thence run SOUTH along the East Road Ditch for a distance of 990.00 ft., more or less, to a point on the North line of Section 24, Township 8 South, Range 5 East; thence run South 89 degrees 42 minutes 29 seconds West for a distance of 40 ft. to the West road ditch of Wesson Park Road or Lee County Public Road No. 521 and the 2005 City Limits; thence run along the West and South road ditch of Lee County Public Road 521 and also the 2005 City Limits line as follows: South 15 degrees 30 minutes 16 seconds East for a distance of 2312.13 ft.; thence South 20 degrees 41 minutes 00 seconds East for a distance of 77.21 ft.; thence South 42 degrees 56 minutes 13 seconds East for a distance of 69.74 ft.; thence South 62 degrees 31 minutes 30 seconds East for a distance of 60.28 ft.; thence South 70 degrees 55 minutes 24 seconds East for a distance of 443.53 ft.; thence South 75 degrees 03 minutes 10 seconds East for a distance of 126.32 ft.; thence South 84 degrees 56 minutes 14 seconds East for a distance of 106.17 ft.; thence South 89 degrees 05 minutes 04 seconds East for a distance of 1162.27 ft.; thence South 87 degrees 52 minutes 35 seconds East for a distance of 189.01 ft.; thence South 88 degrees 22 minutes 17 seconds East for a distance of 509.42 ft.; thence North 89 degrees 58 minutes 59 seconds East for a distance of 585.42 ft.; thence South 87 degrees 21 minutes 57 seconds East for a distance of 180.27 ft.; thence South 86 degrees 09 minutes 09 seconds East for a distance of 218.42 ft.; thence South 89 degrees 36 minutes 12 seconds East for a distance of 203.85 ft.; thence South 89 degrees 02 minutes 56 seconds East for a distance of 396.26 ft. to the west side of Lee County Public Road No. 681 (Slab Road); thence run along the West side of Lee County Public Road No. 681 (Slab Road) and the 2005 City Limits Line as follows: South 46 degrees 13 minutes 00 seconds West for a distance of 490.23 ft.; thence South 39 degrees 40 minutes 00 seconds West for a distance of 347.79 ft.; thence South 30 degrees 09 minutes 00 seconds West for a distance of 473.88 ft.; thence South 35 degrees 07 minutes 00 seconds West for a distance of 313.64 ft.; thence South 45 degrees 00 minutes 00 seconds West for a distance of 597.84 ft.; thence South 46 degrees 52 minutes 00 seconds West for a distance of 496.94 ft.; thence leaving the West side of Lee County Public Road No. 681 (Slab Road) run South 31 degrees 19 minutes 00 seconds East run along the 2005 City Limits Line for a distance of 672.00 ft. to the South line of Section 24; thence run West along the South line of Section 24 for a distance of 2315 ft. more or less to the center of a creek or ditch that is a Mud Creek Tributary East of Mud Creek; thence run along said creek as follows: North 47 degrees 27 minutes 13 seconds West for a distance of 900.25 ft.; thence North 61 degrees 14 minutes 18 seconds West for a distance of 294.59 ft.; thence run North 49 degrees 55 minutes 54 seconds West for a distance of 390.71 ft.; thence North 41 degrees 57 minutes 31 seconds West for a distance of 1379.39 ft.; thence North 32 degrees 02 minutes 37 seconds West for a distance of 608.74 ft. to the point of beginning.

Lying and being mostly in Section 24, Township 8 South, Range 5 East, with small portions in the Southwest Quarter of Section 13, Township 8 South, Range 5 East, in the Southeast Quarter of Section 14, Township 8 South, Range 5 East, in the Southeast and Northeast Quarters of Section 23, Township 8 South, Range 5 East, and the Southwest

Quarter of Section 19, Township 8 South, Range 6 East, Lee County, Mississippi and contains 402 acres more or less.

**AREA 5:**

BEGINNING at the Southwest corner of the Northwest Quarter of Section 19, Township 8 South, Range 6 East and run North 00 degrees 10 minutes 33 seconds West along the West line of Section 19 and the 2005 City Limits line for a distance of 760.42 ft.; thence run North 89 degrees 29 minutes 49 seconds East along the South line of the Rhudy Property and the extension thereof for a distance of 177.59 ft. to the East ditch of Lee County Public Road No. 681; thence run along the East ditch of Lee County Public Road No. 681 as follows South 30 degrees 33 minutes 46 seconds East for a distance of 804.47 ft.; thence South 55 degrees 00 minutes 20 seconds East for a distance of 119.54 ft. to the South line of the Northwest Quarter of Section 19; thence run South 89 degrees 55 minutes West along the South line of the Northwest Quarter of Section 19 for a distance of 677.83 ft. to the point of beginning.

All lying and being in the Northwest Quarter of Section 19, Township 8 South, Range 6 East, Lee County, Mississippi and contains 7 acres, more or less.

**AREA 6:**

BEGINNING at the Southeast corner of the Northwest Quarter of Section 19, Township 8 South, Range 6 East, Lee County, Mississippi and run thence West for 62.00 ft. thence run North 01 degrees 22 minutes 20 seconds West for a distance of 504.48 ft.; thence run North 43 degrees 20 minutes 39 seconds West for a distance of 98.71 ft.; thence run North 53 degrees 08 minutes 07 seconds West for a distance of 262.35 ft.; thence run North 52 degrees 54 minutes 44 seconds West for a distance of 210.11 ft.; thence run North 52 degrees 15 minutes 14 seconds West for a distance of 181.13 ft.; thence run NORTH for a distance of 1067.23 ft.; thence run North 33 degrees 20 minutes 43 seconds East for a distance of 546.00 ft.; thence run North 84 degrees 20 minutes 26 seconds East for a distance of 1265.1 ft. to a point on the North line of Section 19; thence run East along the North line of Section 19 for a distance of 390.8 ft. to the 2005 City Limits; thence run South along the 2005 City Limits for a distance of 2616.94 ft.; thence run West along the 2005 City Limits for a distance of 1286.91 ft. to the point of beginning.

Lying and being part in the Northwest Quarter of Section 19 and part in the Northeast Quarter of Section 19, all in Township 8 South, Range 6 East, Lee County, Mississippi contains 103 acres, more or less.

**AREA 7:**

BEGINNING at the Southwest corner of the Southwest Quarter of Section 7, Township 8 South, Range 6 East, and run West for 36.5 ft. to the West road ditch of Lee County Public Road No. 681; thence North along the West ditch line of Lee County Public Road No. 681 for a distance of 4391 ft.; thence run East 30 ft., more or less to the point where the West line of Section 7 intersects the east ditch of Euclatubba Road; thence run along the East ditch of the Euclatubba Road as follows: South 12 degrees 12 minutes 06 seconds East for a distance of 122.51 ft.; thence South 36 degrees 16 minutes 26 seconds East for a distance of 148.53 ft.; thence South 48 degrees 29 minutes 18 seconds East for a distance of 251.32 ft.; thence leaving said road ditch run East along the North line of the South half of the Northwest Quarter of Section 7 for a distance of 2318.78 ft. to a point on the east line of the Northwest Quarter of Section 7 and the 2005 City Limits Line; thence run South along east line of the Northwest Quarter of Section 7 and the 2005 City Limits Line for a distance of 1334.35 ft. to the South road ditch of Euclatubba Road; thence run South 87 degrees 58 minutes 16 seconds West along the South road ditch of Euclatubba Road for a distance of 526.58 ft. to the center of Euclatubba Creek; thence run along Euclatubba Creek as follows: South 11 degrees 04 minutes 18 seconds East for a distance of 990.69 ft.; thence South 15 degrees 34 minutes 54 seconds East for a distance of 373.22 ft.; thence South 10 degrees 14 minutes 46 seconds East for a distance of 327.47 ft.; thence South 20 degrees 01 minutes 31 seconds East for a distance of 1057.97 ft.; thence South 19 degrees 40 minutes 03 seconds East for a distance of 526.26 ft.; thence run West for a distance of 1767.56 ft.; thence run North 27 degrees 04 minutes 20 seconds West for a distance of 556.80 ft.; thence run West for a distance of 896.97 ft. to the point of beginning.

Lying and being part in the Northwest Quarter, part in the Southeast Quarter, part in the Southwest Quarter of Section 7 and part in the North half of Section 18, all in Township 8 South, Range 6 East, Lee County, Mississippi and contains 247 acres, more or less.

**SECTION 2.** After the addition of the land and territory described in Section 1 hereof, the corporate limits and boundaries of the City of Saltillo, Mississippi shall be and are described as follows, to-wit:

**SALTILLO – ENLARGED CITY**

BEGINNING at the Southeast corner of Section 32, Township 8 South, Range 6 East, Lee County, Mississippi and run thence West along the South line of Section 32 and Section 31, also being the South line of Township 8 South for a distance of 6690 ft. to a point where the South line of Section 31 intersects the West line of Mississippi State Highway No. 145; thence run North 02 degrees 46 minutes 29 seconds East along the

West right of way of Mississippi State Highway No. 145 for a distance of 1190 ft. to the intersection of the West right of way of Mississippi State Highway No. 145 and the South line of Old Hickory Trail; thence run along the South line of Old Hickory Trail as follows: North 45 degrees 06 minutes 49 seconds West 136.13 ft.; thence North 57 degrees 23 minutes 44 seconds West 59.58 ft; thence leaving said road run to and along the West line of the Dollar General property as follows: thence run North 06 degrees 25 minutes 50 seconds West for a distance of 236.33 ft.; thence run North 72 degrees 21 minutes 58 seconds West for a distance of 112.43 ft.; thence run North 02 degrees 46 minutes 46 seconds East for a distance of 354.40 ft. to the North line of the Birmingham Ridge Road; thence run South 89 degrees 23 minutes 15 seconds East along the North line of the Birmingham Ridge Road for a distance of 49.15 ft. to a point that is 300 ft. Westward measured perpendicular from the center line of Mississippi State Highway No. 145; thence run North 02 degrees 46 minutes 29 seconds East along a line that is parallel with and 300 ft. from the center line of Mississippi State Highway No. 145 for a distance of 2220 ft. to a point that is 360 ft. South of the North line of Section 31; thence run West for 1251.66 feet to the West line of the Northeast Quarter of Section 31; thence run North along the West line of the Northeast Quarter of Section 31 and the Southeast Quarter of Section 30 for 2296.68 ft. to a point in line with the South line of Lee County Public Road No. 647; thence run South 89 degrees 02 minutes West for 920.66 feet; thence run North 25 degrees 21 minutes West for 762.70 feet; thence run North 28 degrees 10 minutes West for 971.30 feet; thence run North 38 degrees 12 minutes West for 1399.10 feet; thence run North 54 degrees 10 minutes West for 1108.70 feet to a point on the South line of Section 24, Township 8 South, Range 5 East; thence run West along the South line of Section 24 for a distance of 2315 ft. more or less to the center of a creek or ditch that is a Mud Creek Tributary East of Mud Creek; thence run along said creek as follows: North 47 degrees 27 minutes 13 seconds West for a distance of 900.25 ft.; thence North 61 degrees 14 minutes 18 seconds West for a distance of 294.59 ft.; thence North 49 degrees 55 minutes 54 seconds West for a distance of 390.71 ft.; thence North 41 degrees 57 minutes 31 seconds West for a distance of 1379.39 ft.; thence North 32 degrees 02 minutes 37 seconds West for a distance of 608.74 ft. to a point on the West line of Section 24, Township 8 South, Range 5 East; Thence continuing along the center of said creek or ditch as follows: North 32 degrees 02 minutes 37 seconds West for a distance of 391.0 ft.; thence North 07 degrees 12 minutes 41 seconds West for a distance of 158.71 ft.; thence North 11 degrees 18 minutes 27 seconds East for a distance of 1034.44 ft.; thence North 00 degrees 53 minutes 26 seconds West for a distance of 266.51 ft.; thence North 16 degrees 39 minutes 25 seconds West for a distance of 275.17 ft.; thence North 22 degrees 59 minutes 18 seconds West for a distance of 1065.32 ft.; thence North 25 degrees 49 minutes 11 seconds West for a distance of 519.80 ft.; thence North 18 degrees 31 minutes 28 seconds West for a distance of 245.09 ft. to the North line of the Gregory Property and the South line of the Wesson Property; thence EAST for a

distance of 2140 ft. to the East road ditch of Wesson Park Road or Lee County Road 521; thence run SOUTH along the East Road Ditch for a distance of 990.00 ft., more or less, to a point on the North line of Section 24, Township 8 South, Range 5 East; thence run North 89 degrees 42 minutes 29 seconds East along the North line of Section 24 for a distance of 3134.8 more or less, to an iron pin at the Northwest corner of the Rhudy Property; thence run South 00 degrees 04 minutes 06 seconds East along the West line of the Rhudy and Hill Properties for a distance of 1324.01 ft. to an iron pin; thence run South 89 degrees 49 minutes 06 seconds West along the North line of the Hill Property for a distance of 412.89 ft. to an iron pin; thence run South 01 degrees 16 minutes 08 seconds East along the West line of the Rhudy and Hill Properties for a distance of 563.46 ft. to the Southwest corner of the Rhudy Property; thence run North 89 degrees 29 minutes 49 seconds East along an old fence and the South line of the Rhudy Property and an extension thereof for a distance of 1709 ft. to the East ditch of Lee County Public Road No. 681; thence run along the East ditch of Lee County Public Road No. 681 as follows South 30 degrees 33 minutes 46 seconds East for a distance of 804.47 ft.; thence South 55 degrees 00 minutes 20 seconds East for a distance of 119.54 ft. to the South line of the Northwest Quarter of Section 19, Township 8 South, Range 6 East; run thence North 89 degrees 55 minutes 00 seconds East along the North line of the Southwest Quarter of Section 19 for a distance of 1900 ft. more or less to a point 62 ft. West of the Southeast corner of the Northwest Quarter of Section 19; thence run North 01 degrees 22 minutes 20 seconds West for a distance of 504.48 ft.; thence run North 43 degrees 20 minutes 39 seconds West for a distance of 98.71 ft.; thence run North 53 degrees 08 minutes 07 seconds West for a distance of 262.35 ft.; thence run North 52 degrees 54 minutes 44 seconds West for a distance of 210.11 ft.; thence run North 52 degrees 15 minutes 14 seconds West for a distance of 181.13 ft.; thence run NORTH for a distance of 1067.23 ft.; thence run North 33 degrees 20 minutes 43 seconds East for a distance of 546.00 ft.; thence run North 84 degrees 20 minutes 26 seconds East for a distance of 1265.1 ft. to a point on the North line of Section 19; thence run East along the North line of Section 19 for a distance of 1710.4 ft., more or less, to the Southeast corner of Section 18, Township 8 South, Range 6 East; thence run North for 300 ft., more or less to a point where the East line of Section 18 intersects the Flood Pool & Right of Way contour Elev. 309.7 ft. of the Town Creek Watershed Dam No. 15B Project No. 2021; thence run in a Northerly direction along and with said Flood Pool & Right of Way contour Elev. 309.7 ft. for meandering distance of 15,435 ft. to a point where said Flood Pool & Right of Way contour Elev. 309.7 intersects the South line of Section 7, Township 8 South, Range 6 East and being 360 ft., more or less, West from the Southeast corner of Section 7 said point being North 04 degrees 14 minutes 19 seconds West 5001.4 ft. from the previous point; thence run West along the South line of Section 7 for a distance of 452.2 ft. to the center of a creek; thence run Northeasterly along the center of a creek as follows: thence run North 38 degrees 10 minutes 20 seconds East for a distance of 175.29 ft.; thence run



North 27 degrees 25 minutes 10 seconds East for a distance of 396.12 ft.; thence run North 34 degrees 09 minutes 29 seconds East for a distance of 940.19 ft. to the East line of Section 7 and the West line of Section 8, Township 8 South, Range 6 East, said point being 1270 feet North of the Southeast corner of Section 7; thence run North along the East line of Section 7 and the West line of Section 8 for 50 ft., more or less, to the Southeast corner of the Northeast Quarter of the Southeast Quarter of Section 7, Township 8 South, Range 6 East; thence run West 660 feet; thence run North for 1316.5 ft, more or less to a point in the south road ditch of the Euclatubba Road; thence run along said road ditch as follows: South 89 degrees 45 minutes 20 seconds West for a distance of 408.53 ft.; thence South 89 degrees 00 minutes 45 seconds West for a distance of 208.96 ft.; thence North 89 degrees 50 minutes 24 seconds West for a distance of 225.63 ft.; thence North 88 degrees 08 minutes 14 seconds West for a distance of 242.22 ft.; thence North 88 degrees 59 minutes 48 seconds West for a distance of 232.08 ft.; thence South 89 degrees 01 minutes 18 seconds West for a distance of 499.13 ft.; thence South 88 degrees 33 minutes 51 seconds West for a distance of 163.79 ft. to the West line of the Northeast Quarter of Section 7; thence run South 87 degrees 58 minutes 16 seconds West along the South road ditch of Euclatubba Road for a distance of 526.58 ft. to the center of Euclatubba Creek; thence run along Euclatubba Creek as follows: South 11 degrees 04 minutes 18 seconds East for a distance of 990.69 ft.; thence South 15 degrees 34 minutes 54 seconds East for a distance of 373.22 ft.; thence South 10 degrees 14 minutes 46 seconds East for a distance of 327.47 ft.; thence South 20 degrees 01 minutes 31 seconds East for a distance of 1057.97 ft.; thence run South 19 degrees 40 minutes 03 seconds East for a distance of 526.26 ft.; thence run West for a distance of 1767.56 ft.; thence run North 27 degrees 04 minutes 20 seconds West for a distance of 556.80 ft.; thence run West for a distance of 896.97 ft. to the Southwest corner of the Southwest Quarter of Section 7, Township 8 South, Range 6 East; thence run West for 36.5 ft. to the West road ditch of Lee County Public Road No. 681; thence North along the West ditch line of Lee County Public Road No. 681 for a distance of 4391 ft.; thence run East 30 ft., more or less to the point where the West line of Section 7 intersects the east ditch of Euclatubba Road; thence run along the East ditch of the Euclatubba Road as follows: South 12 degrees 12 minutes 06 seconds East for a distance of 122.51 ft.; thence South 36 degrees 16 minutes 26 seconds East for a distance of 148.53 ft.; thence South 48 degrees 29 minutes 18 seconds East for a distance of 251.32 ft.; thence leaving said road ditch run East along the North line of the South half of the Northwest Quarter of Section 7 for a distance of 2318.78 ft. to a point on the east line of the Northwest Quarter of Section 7; thence run North along the East line of the Northwest Quarter of Section 7 for a distance of 800.37 ft. more or less to an old fence line that is the North line of the Webb Property and the South line of the Poppelreiter Property; thence run North 89 degrees 25 minutes 06 seconds East along said old fence line and its extension for a distance of 1332.48 ft., more or less to the East ditch line of

Lee County Public Road No. 683, also known as Barret Ridge Road; thence South 07 degrees 27 minutes 30 seconds East for a distance of 261.05 ft.; thence South 21 degrees 37 minutes 50 seconds East for a distance of 417.57 ft.; thence South 23 degrees 24 minutes 47 seconds East for a distance of 877.62 ft.; thence South 20 degrees 40 minutes 28 seconds East for a distance of 196.88 ft.; thence South 20 degrees 20 minutes 06 seconds East for a distance of 86.26 ft.; thence leaving said road ditch run South 89 degrees 13 minutes 23 seconds East along a fence line for a distance of 701.55 ft. to the East line of the Northeast Quarter of Section 7; thence run North 2295 feet, more or less to the Southwest corner of Section 5, Township 8 South, Range 6 East; thence run North 4620 ft. to a point that is 660 feet South of the Northwest corner of Section 5; thence run East 1320 feet; thence run North 660 feet to the North line of Section 5; thence run East for 1320 feet to the Northeast corner of the Northwest Quarter of Section 5; thence run East along the North line of Section 5 for 838.14 feet; thence run South 1 degree 26 minutes 57 seconds East for a distance of 398.28 ft.; thence run North 89 degrees 32 minutes 56 seconds East for a distance of 234.82 ft.; thence run South 03 degrees 34 minutes 51 seconds East for a distance of 199.77 ft.; thence run East for a distance of 430.6 ft. to a point on the East right of way of U.S. Highway No. 45; thence run Southwardly along and with the east right-of-way of four-lane U.S. Highway No. 45 as follows: South 27 degrees 18 minutes 24 seconds West for a distance of 855.20 ft.; thence South 27 degrees 10 minutes 07 seconds West for a distance of 426.77 ft.; thence South 19 degrees 42 minutes 11 seconds West for a distance of 297.31 ft.; thence South 26 degrees 46 minutes 46 seconds West for a distance of 296.41 ft.; thence South 16 degrees 28 minutes 03 seconds West for a distance of 296.77 ft.; thence South 23 degrees 30 minutes 13 seconds West for a distance of 299.21 ft.; thence South 14 degrees 27 minutes 21 seconds West for a distance of 661.57 ft.; thence South 23 degrees 22 minutes 14 seconds West for a distance of 371.64 ft.; thence South 13 degrees 17 minutes 24 seconds West for a distance of 366.18 ft.; thence South 14 degrees 11 minutes 30 seconds West for a distance of 545.55 ft.; thence South 19 degrees 59 minutes 32 seconds West for a distance of 669.84 ft. to a point where the North line of Section 8, Township 8 South, Range 6 East, intersects the East right of way of U.S. Highway No. 45; thence continue along the East right of way of U.S. Highway No. 45 as follows: South 19 degrees 59 minutes 32 seconds West for a distance of 137.29 ft.; thence South 14 degrees 46 minutes 55 seconds West for a distance of 304.15 ft.; thence South 40 degrees 15 minutes 24 seconds West for a distance of 106.77 ft.; thence South 12 degrees 25 minutes 27 seconds West for a distance of 306.86 ft.; thence South 33 degrees 54 minutes 15 seconds West for a distance of 258.18 ft.; thence South 21 degrees 15 minutes 43 seconds West for a distance of 284.18 ft.; thence leaving said right of way run East for a distance of 2043.29 to a point on the West ditch of Pulltight Road; thence run along the West ditch of Pulltight Road as follows: North 19 degrees 57 minutes 17 seconds East for a distance of 107.51 ft.; thence North 10 degrees 45 minutes 57 seconds East for a distance of 231.99 ft.; thence North 03 degrees 30 minutes 24 seconds East for a distance of 622.31 ft.; thence North 01 degrees 10 minutes 30 seconds East for a distance of 368.42 ft.; thence North 0 degrees 22 minutes 28 seconds West for 533.90 ft.; thence North 3 degrees 30 minutes 23 seconds West for 136.60 ft.;

thence North 09 degrees 24 minutes 22 seconds West for 154.89 ft.; thence North 14 degrees 21 minutes 14 seconds West for 595.58 ft.; thence North 15 degrees 08 minutes 42 seconds West for 183.92 ft.; thence run North 10 degrees 27 minutes 44 seconds West for 132.75 ft.; thence run North 01 degrees 25 minutes 09 seconds East for 210.33 ft.; thence run North 5 degrees 50 minutes 26 seconds West for 306.78 ft.; thence leaving the West line of said road run South 89 degrees 51 minutes 05 seconds East for 1549.44 ft. to a point on the West line of Section 4, Township 8 South, Range 6 East, said point being 445.5 ft. South of the Northwest corner of the Southwest Quarter of Section 4; thence run South along the 2005 City Limits for 302.0 ft.; thence run South 81 degrees 46 minutes East along the 2005 City Limits for 771.73 ft. to a point on the East line of Mississippi State Highway No. 145; thence run East along the 2005 City Limits for 1876 ft. to a point on the East line of the Southwest Quarter of Section 4, Township 8 South, Range 6 East, said point being 858 ft. South of the Northeast corner of the Southwest Quarter of Section 4; thence run South along the East line of the West half of Sections 4, 9 and 16, Township 8 South, Range 6 East, for a distance of 9010 ft., more or less to a point on the Southeast side of Lake Lamar Bruce Road; thence run along the southeast side of said road with a mean bearing of South 48 degrees 18 minutes 40 seconds West for 463.73 ft.; thence run North 76 degrees 49 minutes 29 seconds West for 140 ft. to the East line of the Southrail Corp. Railroad; thence run along the East line of said railroad as follows: North 13 degrees 10 minutes 31 seconds East for 1219.47 ft.; thence along a curve to the left that has a 5779.58 ft. radius with a chord bearing of North 08 degrees 10 minutes 31 seconds East for a chord distance of 1007.47 ft., to the North line of Section 16, Township 8 South, Range 6 East; thence leaving said right of way run West for 2522 ft. to the Northwest corner of Section 16, Township 8 South, Range 6 East; thence run South for 1000 ft.; thence run East for 958 ft.; thence South 1085 ft.; thence run East for 179.22 ft.; thence run South 235 ft.; thence run East for 1143 ft. to a point in the center of Sand Creek; thence run Southerly along and with the center of Sand Creek for 4025 feet, more or less, to the North right-of-way line of Mississippi State Highway No. 363; thence run North 77 degrees 48 minutes East along said right-of way for 462 feet; thence run North for 750 feet to the North line of Section 21, Township 8 South, Range 6 East; thence run East 2462.5 feet to a point that is 577.5 feet West of the Southeast corner of Section 16, Township 8 South, Range 6 East; thence run North 131 feet, more or less, to a fence corner; thence run North 24 degrees 46 minutes West for 775.3 feet; thence run North 31 degrees 23 minutes East for 1079.42 feet to an iron pin on the Southeast corner of the George W. Marion property; thence run North 24 degrees 43 minutes East for 150 feet, more or less; thence run North 45 degrees East for 180 feet, more or less, to a point on the Southwest corner of the William Bennett property; thence run East for 150 feet, more or less, to a point on the East boundary of Section 16 at a fence corner that is 2018 ft. north of the Southeast corner of said Section 16; thence run North 45 degrees 02 minutes East 143 feet, more or less, to a fence corner; thence run North 13 degrees 32 minutes

East 142 feet, more or less, to a fence corner; thence run North 46 degrees East 151 feet, more or less, to a fence corner; thence run East for a distance of 253.5 ft., more or less to a fence corner; thence run South 136 feet, more or less, to a fence corner; thence run East 250 feet, more or less, to a point in the center of Lee County Public Road 821; thence run Southerly along the center of said road for 925 feet, more or less, to a point in line with the North line of the Leatrice Buse property and being the North line of the South half of the Southwest Quarter of Section 15; thence run West for 642 feet, more or less, to a point on the West line of the Southwest Quarter of Section 15; thence run South along said section line for 1320 feet, more or less, to the Northeast corner of Section 21, Township 8 South, Range 6 East; thence run South for 1100 feet, more or less to a point in Lee County Public Road 821; thence run South 37 degrees 44 minutes 21 seconds West along Lee County Public Road 821 for a distance of 279.71 ft.; thence run West for 2470 feet; thence South 660 feet; thence South 17 degrees 50 minutes West for 315.14 feet; thence South 20 degrees 45 minutes West for 670 feet; thence South 27 degrees 13 minutes West for 246.18 feet; thence run South 15 degrees 36 minutes East for 200.00 feet; thence run South 09 degrees 02 minutes East for 472.30 feet; thence South 89 degrees 52 minutes East for 73.02 feet; thence South 02 degrees 13 minutes East for 162.30 feet; thence run West for 268.60 feet; thence run South 300.0 feet; thence run East for 588.23 feet, more or less, to the Northwest boundary of the Natchez Trace Parkway; thence run along said boundary as follows: South 45 degrees 38 minutes 51 seconds West for 171.73 feet; thence South 25 degrees 25 minutes 48 seconds West for 689.99 feet; thence South 42 degrees 55 minutes 02 seconds West for 382.44 feet; thence leaving said boundary run West for 2010 feet to the Southwest corner of Section 21, Township 8 South, Range 6 East; thence run South for 2640 feet, more or less to the Northeast corner of the Southeast Quarter of Section 29, Township 8 South, Range 6 East; thence run West for 654 feet to the West line of the Gulf-Mississippi Railroad (formerly IC&G); thence run South 13 degrees 03 minutes 32 seconds West along the West line of said railroad for 1358.36 feet; thence leaving said right-of-way, run North 89 degrees 16 minutes West for 1332.50 feet; thence run South 85 degrees 31 minutes West for 189.50 feet; thence run South 72 degrees 09 minutes West for 170.56 feet; thence run West for 144.17 feet to the East right of way of U.S. Highway No. 45; thence run South 0 degrees 13 minutes 09 seconds East along said right of way for 843.39 feet; thence run South 89 degrees 46 minutes 51 seconds West for 485.00 feet to the west right of way line of U.S. Highway No. 45; thence run along said right of way as follows: thence run North 00 degrees 13 minutes 09 seconds West for 2909.75 feet; thence run North 09 degrees 14 minutes 36 seconds East for 304.14 feet; thence run North 00 degrees 03 minutes 58 seconds West for 467.20 feet; thence run along a curve to the left that has a radius of 7439.44 feet with a chord bearing of North 06 degrees 44 minutes 56 seconds West for a chord distance of 2580.08 feet; thence leaving said right of way run South 89 degrees 53 minutes 00 seconds West for a distance of 1437.72 ft. to the East line of Turner Park Road; thence

run along the East line of Turner Park Road as follows: South 14 degrees 53 minutes 44 seconds West for a distance of 517.99 ft.; thence with a curve to the left with an arc length of 416.32 ft., with a radius of 1379.30 ft., with a chord bearing of South 06 degrees 28 minutes 39 seconds West, with a chord length of 414.74 ft.; thence run South 03 degrees 03 minutes 58 seconds East for a distance of 1014.25 ft. to a point in line with north line of the Lee County Supervisors 2<sup>nd</sup> District Maintenance Shop; thence run North 73 degrees 13 minutes 47 seconds West along a line that is the extension of the north line of the Lee County Supervisors 2<sup>nd</sup> District Maintenance Shop for a distance of 522 ft. to the Northeast corner of the Lee County Supervisors 2<sup>nd</sup> District Maintenance Shop; thence run South 10 degrees 48 minutes West for 594.34 feet; thence run North 89 degrees 58 minutes West for 104.50 feet; thence South 00 degrees 03 minutes East for 310.95 feet; thence run South 88 degrees 39 minutes 10 seconds East for a distance of 222.62 ft.; thence run South 01 degrees 15 minutes 59 seconds West for a distance of 141.37 ft. to the north line of Industrial Park Road; thence run South 87 degrees 04 minutes 01 seconds East along the north line of Industrial Park Road for a distance of 252.70 ft. to the point where the North line of Industrial Park Road intersects the East line of Section 30, Township 8 South, Range 6 East; thence run South 87 degrees 04 minutes 01 seconds East along the North line of Industrial Park Road and its extension for a distance of 293.27 ft. to the East line of Turner Park Road; thence run South 03 degrees 03 minutes 58 seconds East along the East line of Turner Park Road for a distance of 710.0 ft. thence with a curve to the left with an arc length of 480.60 ft., with a radius of 1024.35 ft., with a chord bearing of South 12 degrees 17 minutes 18 seconds East, with a chord length of 476.20 ft.; thence leaving said road run West for a distance of 390.89 ft. to the center of Euclatubba Creek and the 2005 City Limits Line; thence run along the center of Euclatubba Creek as follows: South 40 degrees 32 minutes East for 1039.59 feet; thence South 32 degrees 26 minutes East for 937.01 feet; thence leaving said creek run South 88 degrees 40 minutes West for 2165 feet; thence run South 02 degrees 30 minutes West for 210.0 feet; thence South 02 degrees 30 minutes West for 294.0 feet; thence South 87 degrees 34 minutes East for 50.00 feet; thence South 01 degrees 39 minutes West for 87.60 feet; thence South 12 degrees 18 minutes West for 404.14 feet; thence North 88 degrees 40 minutes East for 962.00 feet to the Southeast corner of Section 30, Township 8 South, Range 6 East of Lee County, Mississippi; thence run North 88 degrees 40 minutes East for 1327.28 feet to Euclatubba Creek; thence run along said creek as follows: South 08 degrees 37 minutes East for 464.58 feet; thence run South 06 degrees 43 minutes East for 512.08 feet; thence run South 05 degrees 29 minutes West for 187.41 feet to a point on the Northwest boundary of the Natchez Trace Parkway; thence run along said boundary as follows: South 78 degrees 58 minutes East for 260.85 feet to N.P.S. Marker No. 690; thence North 48 degrees 01 minute East for 699.77 feet to N.P.S. Marker No. 689; thence run North 59 degrees 25 minutes East for 1413.88 feet to N.P.S. Marker No. 688; thence run North 18 degrees 14 minutes East for

359.37 feet to N.P.S. Marker No. 687; thence run South 84 degrees 34 minutes East for 596.98 feet to a point on the West right-of-way line of the Kansas City Southern Railway; thence run South 13 degrees 09 minutes West along said right of way for 290.64 feet to a point where said line intersects the North line of Section 32, Township 8 South, Range 6 East; thence run East for 1239 feet to the Northeast corner of Section 32; thence run South for 4502 feet to the point of beginning.

**SECTION 3.** The City of Saltillo shall make the following improvements in said annexed territory to be completed within a reasonable time, not to exceed five (5) years from the effective date of this Ordinance, unless delayed by war or military preparedness:

- (a) Improve existing streets and drainage where necessary and economically feasible and legally permissible;
- (b) Install water lines, water service, sewage disposal lines, sewage treatment facilities, sewer service and street lighting, where necessary and economically feasible and legally permissible;
- (c) Said services shall be furnished in the same manner as such services are being furnished to the present citizens of the municipality where necessary and economically feasible and legally permissible.

**SECTION 4.** That the City of Saltillo shall furnish to the said annexed territory the following municipal and public services in the same manner and to the same extent as such services are being furnished to the present citizens of the municipality, such services being on the effective date of this Ordinance, to-wit:

- a) Police Protection;
- b) Fire Protection;
- c) Planning and Zoning;
- d) Brush and other debris removal (as necessary and feasible);
- e) Animal Control;
- f) Maintenance of existing streets, rights of way and drainage structures and facilities;
- g) Street lighting (as necessary and feasible);
- h) Municipal code enforcement and building inspections;
- i) Parks and recreation service;
- j) The right to exercise the ballot in municipal elections upon registering and meeting all statutory and constitutional voting requirements; and
- k) The availability, use and benefit of all other municipal services and facilities furnished by the City of Saltillo, Mississippi, to all of the present citizens of the said municipality.

**SECTION 5.** The City of Saltillo, Mississippi, through its attorney, shall file a petition in the Chancery Court of Lee County, Mississippi, which petition shall recite the fact of the adoption of this Ordinance and shall request the approval, ratification and

confirmation by the said Court of the enlargement and extension of the municipal boundaries and limits of the City of Saltillo, Mississippi, as herein fixed and determined. Said petition shall have attached thereto a certified copy of this Ordinance and a plat or map showing the boundaries of the said City of Saltillo, Mississippi, as they will exist in the event such enlargement and extension becomes effective pursuant to this Ordinance as provided for herein, in Section 2, above.

**SECTION 6.** The City of Saltillo, Mississippi shall undertake the following planning and zoning activities following the effective date of this Ordinance, to-wit:

(a) The City of Saltillo shall enlarge, update, revise and amend its Comprehensive Plan to include all territory annexed to the municipality and the City Board of Alderman shall adopt such revisions fulfilling all legal requirements to do so including public notice and a public hearing on enlargement, updating, revision and amendments of the Comprehensive plan.

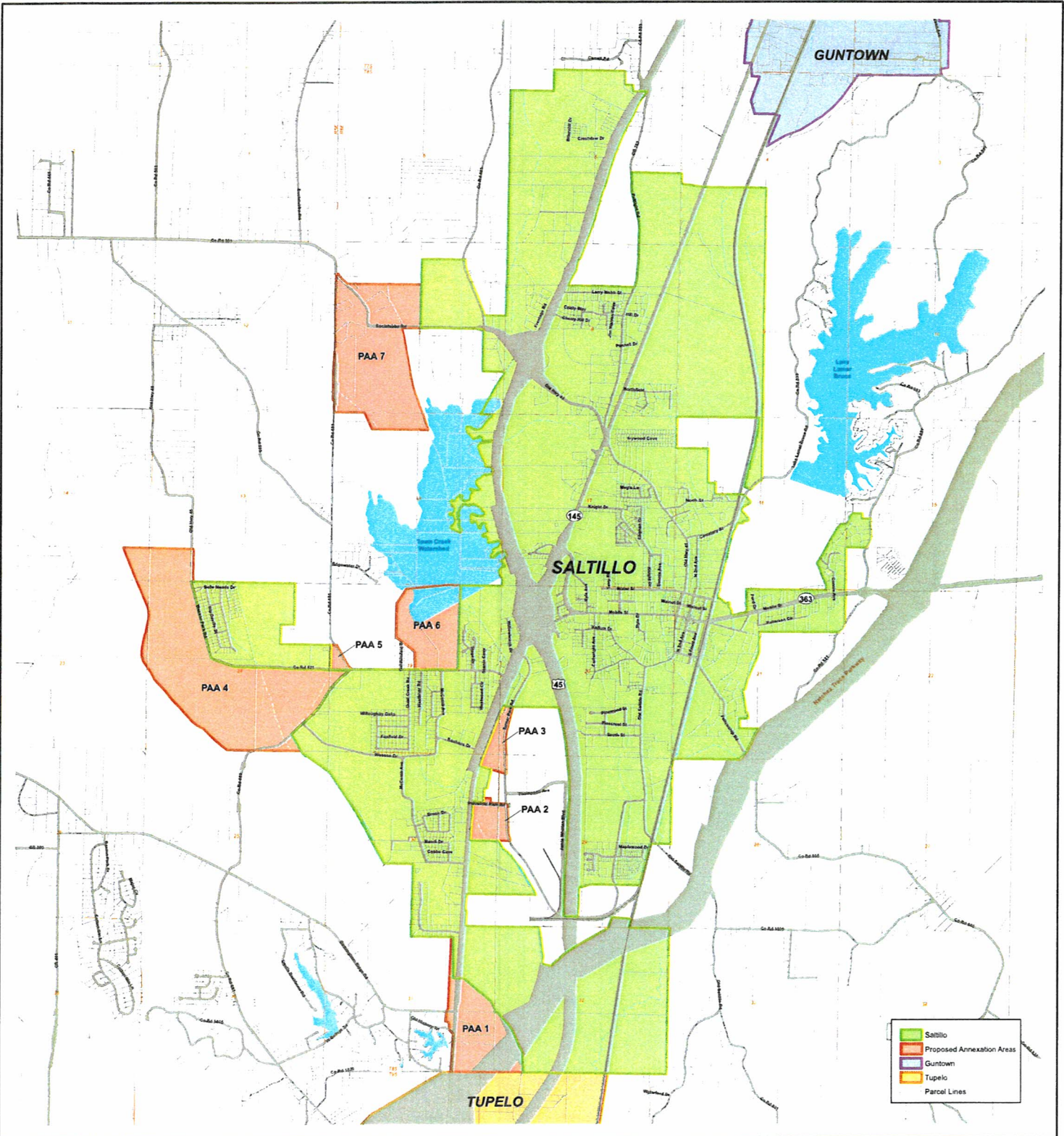
(b) Following modification of the Comprehensive Plan to include territories annexed, the City of Saltillo shall prepare and adopt, or otherwise amend, its Official Zoning Map and Zoning Ordinance as necessary to implement the adopted Comprehensive Plan. All territory annexed shall be included on the City's Official Zoning Map and shall be classified thereon in conformance with the City's adopted Comprehensive Plan. Adoption of Zoning Ordinance text amendments and additions to the City's official Zoning Map by the City Board of Aldermen shall occur after proper notice and public hearing(s).

**SECTION 7.** That this Ordinance shall supersede any proposed annexation ordinances passed by the Saltillo Board of Aldermen since the last successful city annexation and shall become effective ten (10) days after the date of the entry of the Decree of the Chancery Court of Lee County, Mississippi, ratifying, approving and confirming the enlargement and extension of the boundaries of the City of Saltillo, Mississippi, as established by this Ordinance and Decree of said Chancery Court.

SO ORDAINED BY THE MAYOR AND BOARD OF ALDERMEN OF THE CITY OF SALTILLO, MISSISSIPPI, on this the 17th day of August, 2021.

MOTION to adopt the foregoing Ordinance was made by Alderperson Sanders and SECONDED by Alderperson Morgan and the foregoing, having first been reduced to writing, was submitted to a Roll Call Vote, the result was as follows:

Alderman Witcher	voted:	<u>Yea</u>
Alderman Clark	voted:	<u>Absent</u>
Alderman Glidewell	voted:	<u>Yea</u>



**BRIDGE & WATSON INC.**  
 URBAN PLANNERS • CONSULTANTS • ADVISORS  
 TEL: 662.234.0958 | FAX: 662.234.0997  
 CWATSON@PLANNING-CONSULTANTS.COM  
 307 HERITAGE DR. STE. 201 | PO BOX 1482 | OXFORD, MS 38655

## Proposed Annexation Areas Saltillo, Mississippi

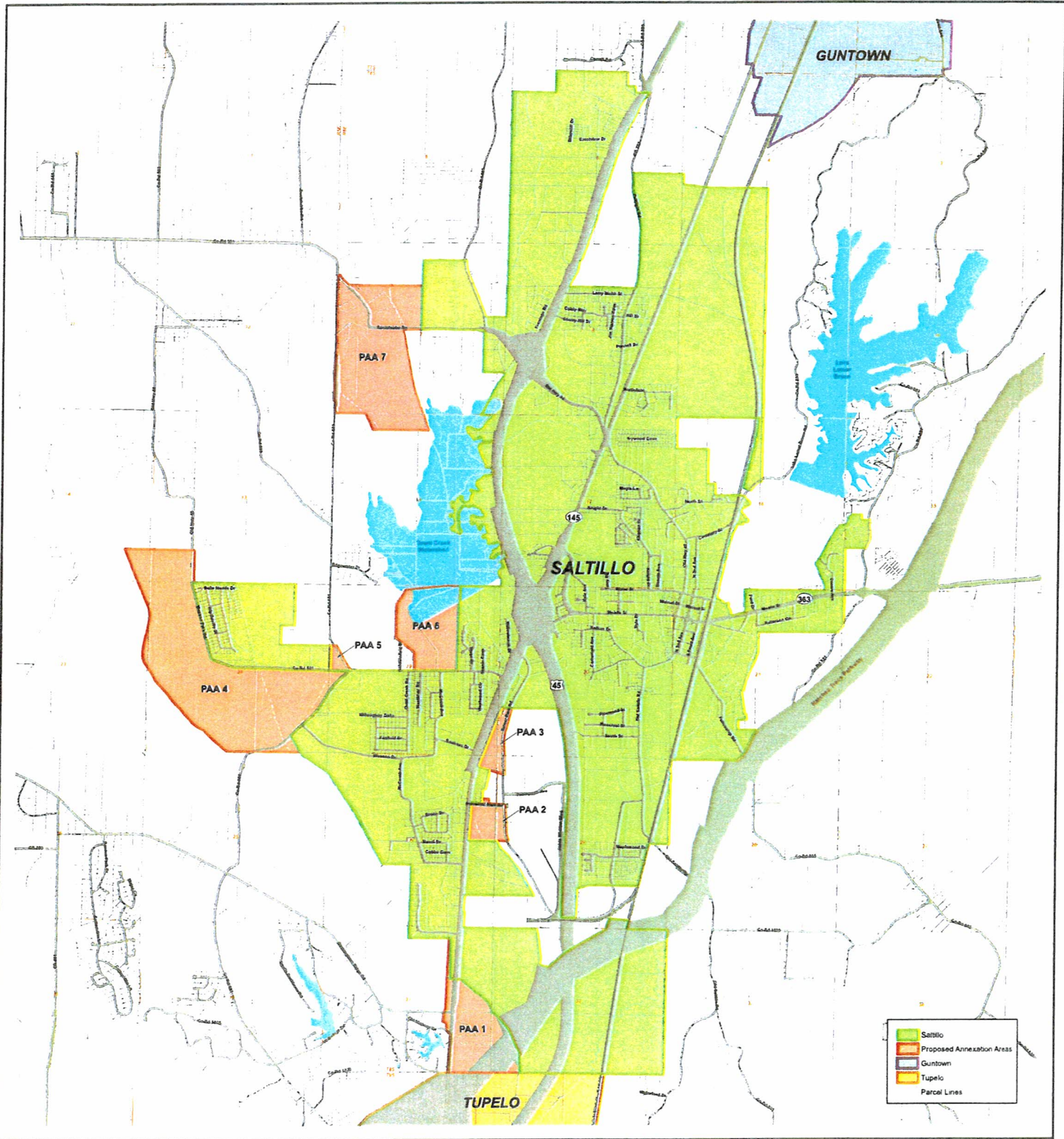


This map is accurate for  
 planning purposes only.

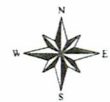
Data Sources:  
 MARIS (MS TM) data  
 U.S. Census TIGER 2010 data  
 Tri-State Consulting, City of  
 Saltillo; Bridge & Watson, Inc.

August 12, 2021





## Proposed Annexation Areas Saltillo, Mississippi



This map is accurate for  
 planning purposes only

Data Sources  
 MARIS (MSTM) data  
 U.S. Census TIGER 2010 data  
 Tri-State Consulting, City of  
 Saltillo, Bridge & Watson, Inc.

August 12, 2021

Alderman Morgan

voted: Yea

Alderman Sanders

voted: Yea

Whereupon, the Mayor declared the Ordinance carried and the Ordinance adopted.

The foregoing Ordinance is approved this the 17th day of August, 2021.

CITY OF SALTILLO, MISSISSIPPI

By:   
Copey Grantham, Mayor

ATTEST:

By:   
Mary Parker, City Clerk

